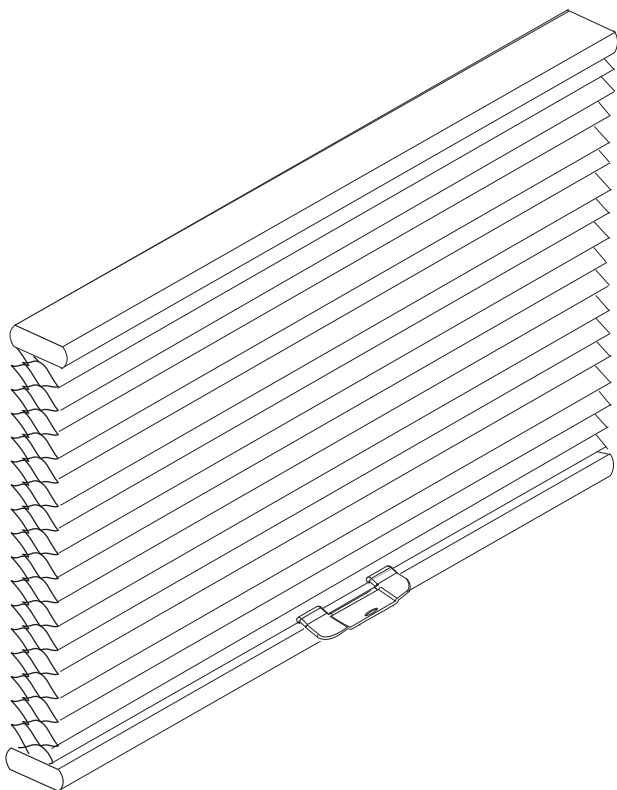

Express Cordless Honeycomb Shades

INSTALLATION INSTRUCTIONS



Express Cordless Honeycomb Installation Instructions

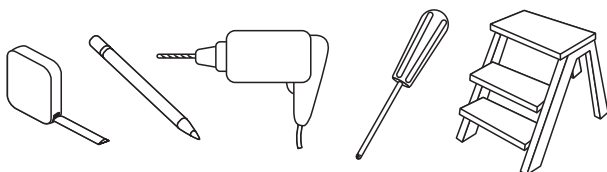
Step 1. Check Package Contents

Mounting hardware kit includes the following:

Part	Quantity
a Mounting Brackets	2 (for 18" to 36" wide shades) 3 (for 36" to 48" wide shades) 4 (for 48" to 72" wide shades)
b 1 1/8" Screws	2 per bracket
c. Hold Down Brackets	2 per shade
d 1/2" Screws	2 per bracket (for hold downs)
e Handle for Bottom Rail	

Step 2. Tools Required

Screwdriver, tape measure, pencil, drill, drill bits, step ladder



Note: use #6 plastic anchors for dry wall or plaster mounting (not included).
Drill Bits: for screws, use a 3/32" drill bit - for wall anchors, use 1/4" drill bit.

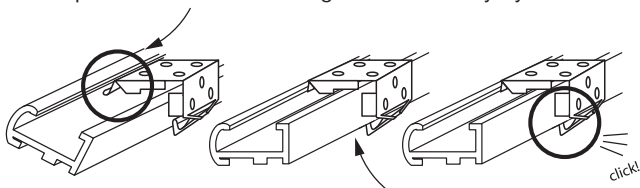
Step 3. Bracket Location and Installation

Your shade may be installed either inside the window frame or outside the window frame.

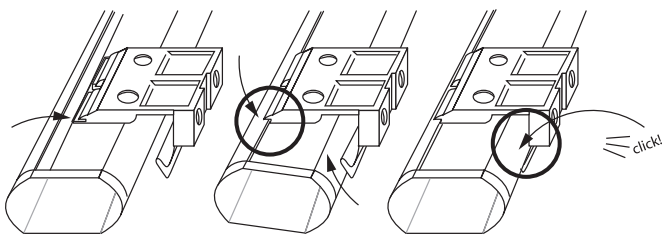
A mounting bracket should be positioned about 1" to 6" from each end of the head rail. For wider shades that require 3 or more brackets, these should be spaced evenly between the two outermost brackets. Always position the brackets such that there is no interference with the cords and/or mechanisms inside the head rail. The procedure outlined below will assure proper bracket placement.

Attaching the brackets:

The shape of head rails and mounting brackets varies by style of shade.



Lift the head rail into position such that the front edge of each bracket is under the inner front edge of the head rail. Push the head rail upward until the flexible tab at the bottom of each bracket snaps onto the back of the head rail. Check carefully to assure that each bracket is properly secured.



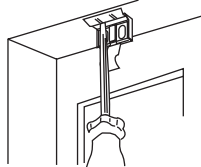
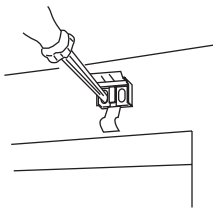
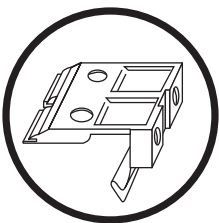
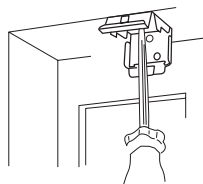
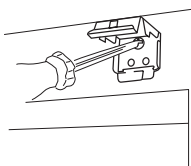
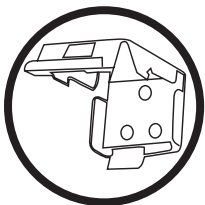
Lift the head rail into position such that the inner front edge of the head rail slides into the slot at the front of each bracket. Push the head rail upward until the flexible tab at the bottom of each bracket snaps onto the back of the head rail. Check carefully to assure that each bracket is properly secured.

For Outside Mounting:

Clip the brackets onto the head rail as described above. Hold the shade level at the height desired and center it over the window opening. Mark the exact location of each bracket with a pencil. Remove the brackets from the head rail and position the top of each bracket at the marked location and screw each bracket into the wall or window molding using the 1 1/8" screws, pre-drill the screw holes using a 5/64" drill bit.

For Inside Mounting:

Clip the brackets onto the head rail as described above. Hold the shade in place and make a pencil mark at the rear of each bracket where it contacts the inside of the window frame. Remove the brackets from the head rail and align them with the marks. Attach each bracket using the 1 1/8" screws, pre-drill the screw holes using a 5/64" drill bit.

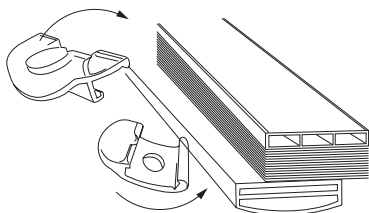


Step 4. Attach Handle(s)

Attach the Handle to the bottom rail as illustrated. The handle is designed to minimize contact with the shade fabric.

Express Cordless Honeycomb Installation Instructions

Step 4.-continued



Step 5. How to Operate

Cordless Shade

Always raise and lower the shade SLOWLY(!) to assure that the pleated fabric stacks neatly.

To lower the shade: grip the bottom-rail/handle and slowly pull straight down.

To raise the shade: put one hand under the bottom rail (palm facing up) and lift slowly until the desired height is reached.

Step 6. Installing Hold-Down Brackets

Hold down brackets are provided for optional use. These brackets should be used only if the shade is to be in a permanently lowered position. With the shade fully lowered, make pencil marks at the outside ends of the bottom rail. Brackets should be lined up to the pencil marks and screwed into place using the 1/2" screws. Insert the pins protruding from the brackets into the holes on both ends of the bottom rail (see illustration).

