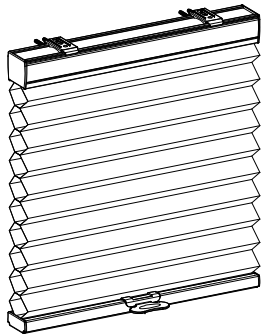


Installation Instructions

Honeycomb Shades

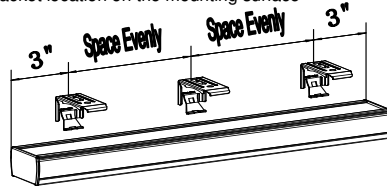
Cordless



1 1/4" Screw for Installation Bracket	4	6	8
2" Screw for Installation Bracket with spacer	4	6	8
3/4" Screw for Hold Down Bracket	4	4	4

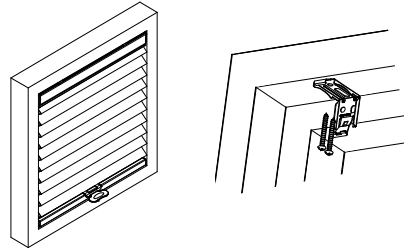
Step 1: Bracket Installation

- Measure 3" from both ends of the head rail. Mark the bracket location on the mounting surface



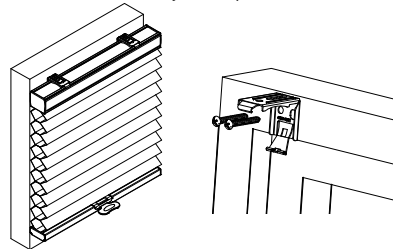
Inside Mount

- Align the front of brackets flush with the wall.
- Use two #8 1 1/4" mounting screws to secure brackets. Use wall anchors for drywall or plaster wall.



Outside Mount

- Align the end of brackets with the top window frame.
- Use two #8 1 1/4" mounting screws to secure brackets. Use wall anchors for drywall or plaster wall.

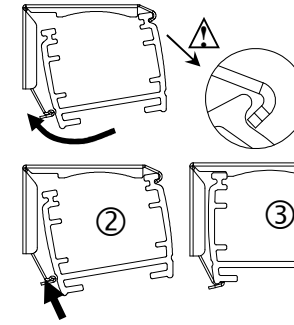


Step 2: Shade Installation

- Position head rail at an angle so that it is hooked to the front of the bracket. Then push it upward to snap into the bracket.

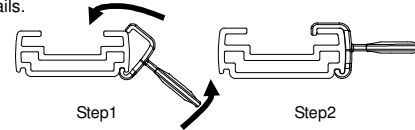
⚠ For proper installation, start with attaching the

front rail to the bracket.

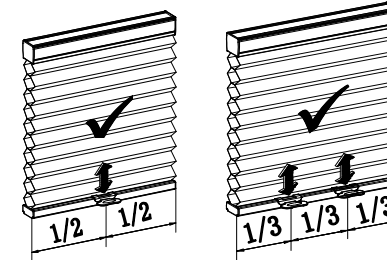


Step 3: How to Install Shade Handle

Slide the handle onto the plastic piece pre-attached to the rails.



Step 4: Shade Operation



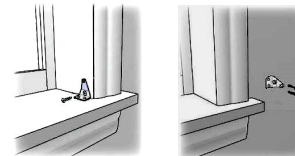
To lower the shade, gently pull down on the shade on the bottom rail handle and stop at the desired location.

To raise the shade, gently raise the shade on the bottom rail handle to desired height.

⚠ Do not grasp the rail unevenly. Always lower or raise the shade in the middle or use both hands with even pressure to two handles of the rail.

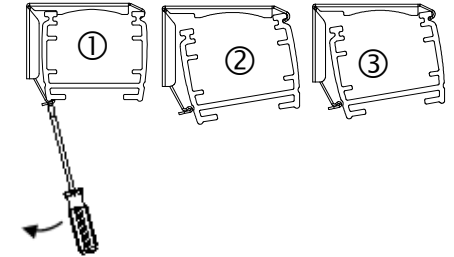
Step 5: How to Install Hold Down Brackets (only available for shade width ≤ 32")

- Use #6 3/4" screw to secure each bracket.



Remove the Shade

Gently pry the bracket off the head rail with a flat screwdriver. Remove the shade.

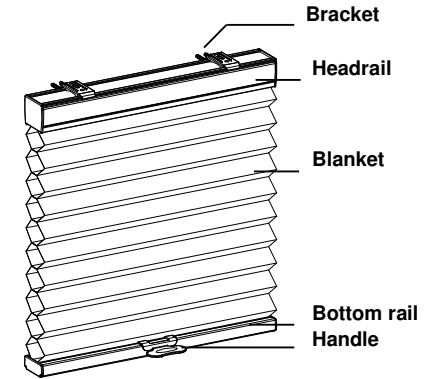


Cleaning the Shade

Routine cleaning will help maintain the beauty of your shade. The shade can be cleaned by using a soft brush, vacuumed with a low suction hand-held vacuum, cleaned ultrasonically (specify that a mild solution must be used and that the head rail should never be immersed in liquid), or dampen a clean cloth with a warm water and mild detergent solution to dab the spot until it's gone (do not rub!).

Troubleshooting

Problem	Solution
The shade will not snap into the mounting brackets	Check if mounting brackets are aligned. Refer to Step 1.
The shade will not lift	Gently pull down on the bottom rail to reactivate the cordless mechanism. Repeat if necessary.
The shade stack up unevenly	Lower the shade completely, then raise it up to correct it. Repeat if necessary.



65101-11723

Getting Started




Remove shade from package. Save packaging until shade is installed and working to your satisfaction.

Tools:

- Level
- Measuring Tape
- Pencil
- Power drill (1/4" hex driver and drill bit)
- Screwdriver
- scissors



You will need to use the following fasteners for your particular mounting surface.

Surface	Fastener
Wood	#8 1 1/4" Hexagonal Head Screws (Provide) 
Drywall/Plaster	Wall Anchors, Expansion Bolts (Not Provide) 
Metal	Sheet Metal Screws (Not Provide) 

Hardware Standard Quantity

Order Width (X)	X ≤ 36"	36" < X ≤ 60"	60" < X
Installation Bracket	2	3	4
Handle	1pcs for X ≤ 50", 2pcs for X > 50"		
Hold Down Bracket	2pcs, only available for shade width for X ≤ 32"		
Spacer (Optional)	1pc for extend distance 10mm 2pcs for extend distance 10~18mm		